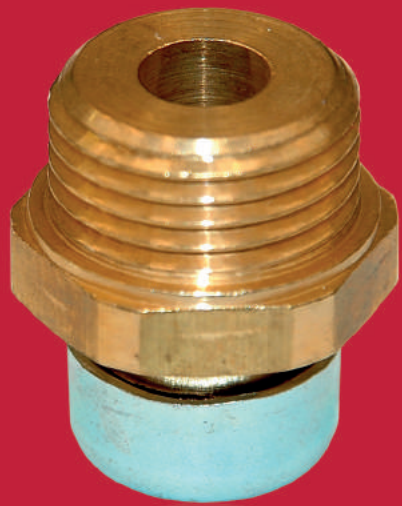


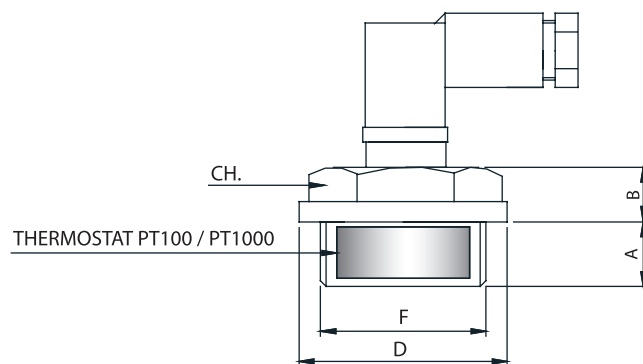
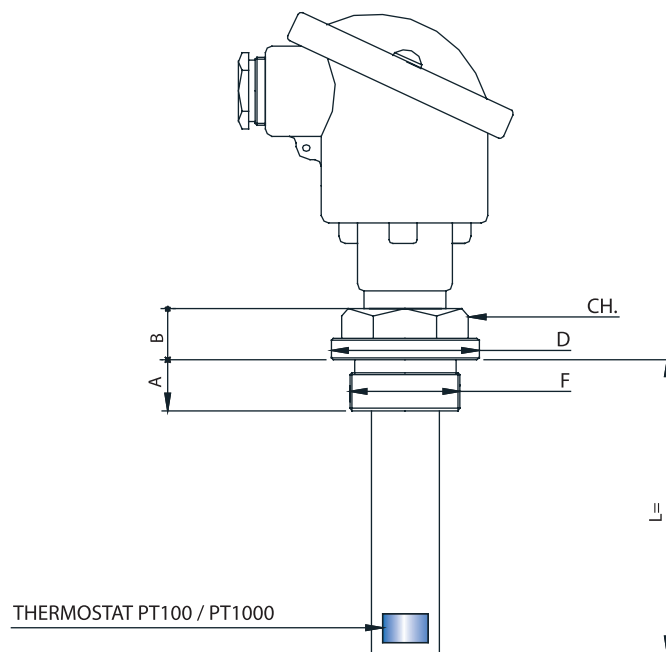
PLUGS

Plugs different types of plugs for all applications in your tank.



TEMPERATURE PROBE T+T

ONE INSTRUMENT FOR TWO FUNCTIONS



The temperature probe occupies the space provided for every common drain plug for tanks, control units, oil sumps, etc.

With **N.O.** contacts, it is used to send an electrical signal when the temperature of the liquid exceeds a limit deemed acceptable.

The **N.C.** thermostats are normally used as thermoprotectors: they disconnect the voltage, stopping the system, when the temperature is too high.

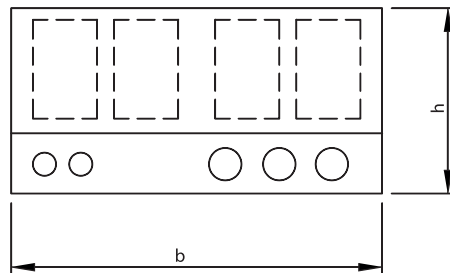
The standard range provides for thermostats at **50° - 60° - 70° - 80°C**. With **N.O.** contacts normally open or **N.C.** contacts normally closed.

Besides the possibility of a thermostat, probe temperature can be combined with the PT100 / PT1000 have a signal for continuous temperature controlled through a PLC.

Both for the version with the thermostat and PT100/PT1000, it is possible to have one cockpit in brass or AISI 316 wells in order to arrive at the desired point.

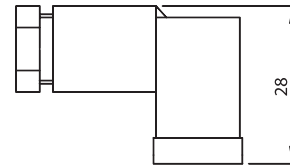
TECHNICAL DATA AND ORDER

DIGITAL DISPLAYS

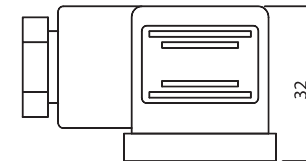


ELECTRICAL CONNECTIONS

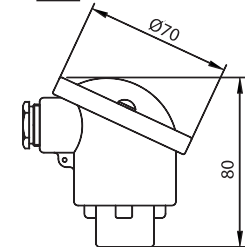
A MICRO CONNECTOR
IP65 SHAPE "C"



B CONNECTOR IP65
SHAPE "A"



C ALUMINUM HEAD
IP65



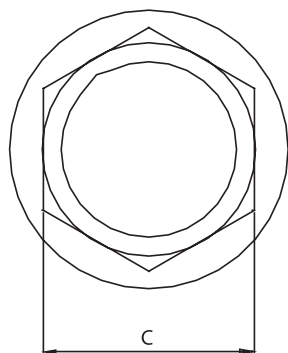
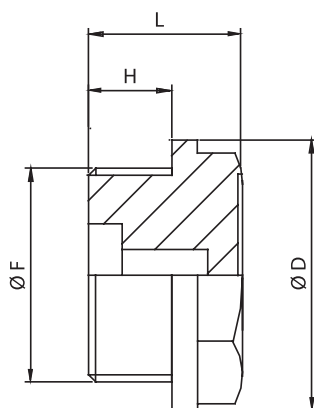
THERMOSTAT ELECTRICAL CHARACTERISTICS	
VOLTAGE	250 V. COMMUTABLE
FREQUENCY	50 Hz
LOAD VALUES	4,0 A. $\cos \varphi = 0,6$ (I M OT) 6,3 A. $\cos \varphi = 1,0$ (I N)
MAX. LOAD	10 A. $\cos \varphi = 1$
COMMUTATING TEMPERATURE	50°C - 60°C - 70°C - 80°C
CONTACTS	N.CH. = NORMALLY CLOSED N.A. = NORMALLY OPEN
TOLERANCES	$\pm 5^\circ\text{C}$

MOD.	TEMPERATURE SENSOR		VERSION	PROCESS CONNECTION - F	PROCESS CONNECTION MATERIAL				POSSIBILITY 'VERSIONS			CONNECTION TYPE			OUTPUT 4-20mA	OPTIONAL DISPLAY (ONLY FOR OUTPUT 1)		L cockpit (only for version O - I)
						D	A	B	CH.	S - NO COCKPIT	O - WITH BRASS COCKPIT	I - WITH S/STEEL COCKPIT	A	B	C			
T+T	1	PT 100	S	NO COCKPIT	1	1/2" GAS	ALUMINIUM	28	9	8	22	S	O	I	A	-	WITHOUT	-
					2	3/8" GAS	BRASS NICKEL	/	14	8	20		O		A			
	2	PT 1000			3	3/4" GAS	ALUMINIUM	35	10	9	27	S	O	I	A			
	3	THERMOSTAT 50°C - NO	O	WITH BRASS COCKPIT	4	1" GAS	ALUMINIUM	42	13	11	34	S	O	I	A	C	4-20mA OUTPUT ONLY FOR CONNECTION 'C'	A
	4	THERMOSTAT 60°C - NO			5	M18x1,5	BRASS NICKEL	/	16	8	30		O		A			
	5	THERMOSTAT 70°C - NO			6	M20x1,5	ALUMINIUM	28	9	8	22	S	O	I	A			
	6	THERMOSTAT 80°C - NO			7	M22x1,5	ALUMINIUM	28	9	8	22	S	O	I	A			
	7	THERMOSTAT 50°C - NC	I	WITH S/STEEL COCKPIT	8	1" GAS	S/STEEL AISI 316	45	12	10	40			I		B	C	B
	8	THERMOSTAT 60°C - NC												I				
	9	THERMOSTAT 70°C - NC												I				
	10	THERMOSTAT 80°C - NC			9	1" NPT	ALUMINIUM	36	18	6	30					B		
T+T	6		I		8							I			C	1	B	150

TM

METAL PLUGS

- Made with milled hexagonal head and crown in light aluminium alloy.
- Seal ensured by a gasket with oilproof plain washer.
- For adequate quantities they can be supplied with special threads and with materials on request, or to customer design.
- They are normally supplied with label bearing the word OIL.



TMS

METAL PLUGS WITH BREATHER

- Made with milled hexagonal head and crown in light aluminium alloy.
- Seal ensured by a gasket with oilproof plain washer.
- In the TMS range, the breather consists of a 2mm hole, which maintains the atmospheric pressure inside the tank.
- For adequate quantities they can be supplied with special threads and with materials on request, or to consumer design.
- They are normally supplied with label bearing the word OIL.

GAS TYPE	MATERIAL	SEAL	HOLE	F	C	H	L	D
TM 1/8" GAS	ALLUMINIUM	FLEXOID™	NO	1/8" GAS	14	8	14	16
TM 1/4" GAS				1/4" GAS	17	9	16	20
TM 3/8" GAS				3/8" GAS	18	9	17	22
TM 1/2" GAS				1/2" GAS	22	9	17	28
TM 3/4" GAS				3/4" GAS	27	10	19	35
TM 1" GAS				1" GAS	34	12,5	23,5	42
TMS 1/8" GAS	ALLUMINIUM	FLEXOID™	SI	1/8" GAS	14	8	14	16
TMS 1/4" GAS				1/4" GAS	17	9	16	20
TMS 3/8" GAS				3/8" GAS	18	9	17	22
TMS 1/2" GAS				1/2" GAS	22	9	17	28
TMS 3/4" GAS				3/4" GAS	27	10	19	35
TMS 1" GAS				1" GAS	34	12,5	23,5	42
METRIC TYPE	MATERIAL	SEAL	HOLE	F	C	H	L	D
TM - M 10x1	ALLUMINIUM	FLEXOID™	NO	M 10x 1	14	8	14	16
TM - M 14x1,5				M 14x1,5	17	9	16	20
TM - M 16x1,5				M 16x1,5	18	9	17	22
TM - M 18x1,5				M 18x1,5	20	9	17	26
TM - M 20x1,5				M 20x1,5	22	9	17	28
TM - M 22x1,5				M 22x1,5	22	9	17	28
TMS - M 10x1	ALLUMINIUM	FLEXOID™	SI	M 10x 1	14	8	14	16
TMS - M 14x1,5				M 14x1,5	17	9	16	20
TMS - M 16x1,5				M 16x1,5	18	9	17	22
TMS - M 18x1,5				M 18x1,5	20	9	17	26
TMS - M 20x1,5				M 20x1,5	22	9	17	28
TMS - M 22x1,5				M 22x1,5	22	9	17	28

TM/M

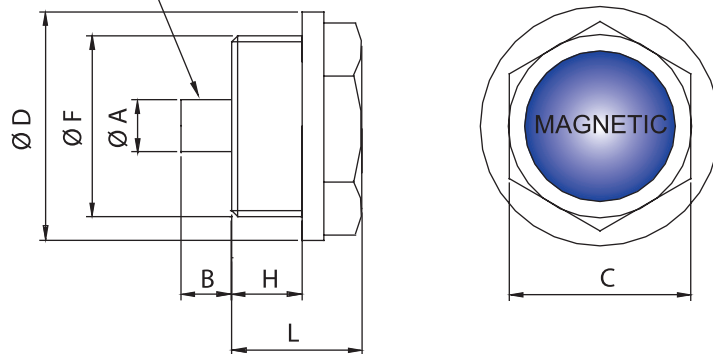
METAL PLUGS WITH PERMANENT MAGNET



Consisting of a milled hexagonal head and crown in light aluminium alloy, the metal plug with magnet (which can also be used as a normal tank drain plug) can catch the metal particles present in the oil.

- Seal ensured by a gasket with oilproof plain washer.
- Permanent magnet in cobalt alloy.
- For adequate quantities they can be supplied with materials and special executions to customer design.

PERMANENT MAGNET



GAS TYPE	F	C	D	H	L	A	B
TM / M 1/4" GAS	1/4" GAS	17	20	9	16	6	6
TM / M 3/8" GAS	3/8" GAS	18	22	9	17	8	6
TM / M 1/2" GAS	1/2" GAS	22	28	9	17	10	8
TM / M 3/4" GAS	3/4" GAS	27	35	10	19	12	11
TM / M 1" GAS	1" GAS	34	42	12,5	23,5	25	13
METRIC TYPE	F	C	D	H	L	A	B
TM / M 14x1,5	M 14x1,5	17	20	9	17	6	6
TM / M 16x1,5	M 16x1,5	18	22	9	17	8	7
TM / M 18x1,5	M 18x1,5	20	26	9	17	8	6
TM / M 20x1,5	M 20x1,5	22	28	9	17	10	8
TM / M 22x1,5	M 22x1,5	22	28	9	17	10	8

TM/MI

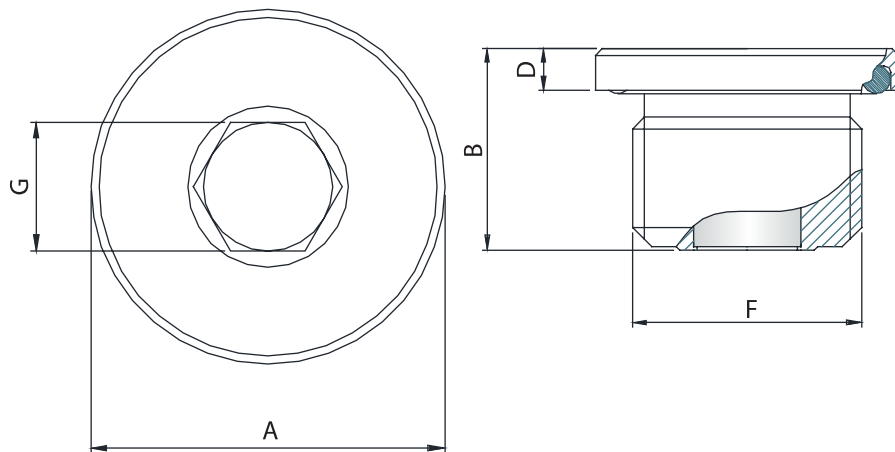
METAL PLUGS WITH ENCASED MAGNET



- Body material: steel galvanized white
- Sealing: NBR synthetic rubber.
- Magnet: neodymium 35 galvanized
- Maximum operating temperature continuous: 80° C

For adequate quantities, there is a neodymium magnet suitable for temperatures up to 160 ° C.

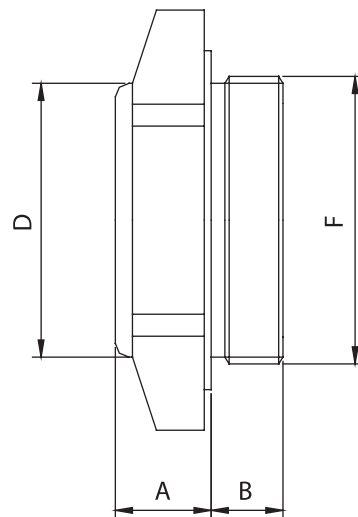
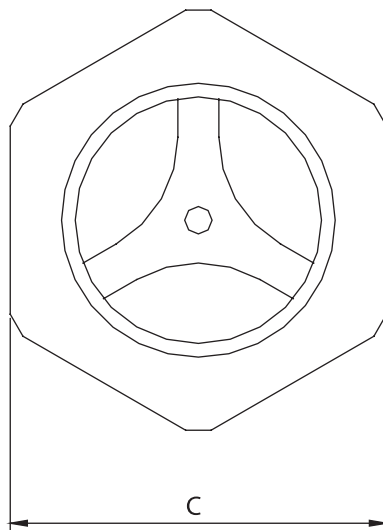
- The magnet encased eliminates any risk of interference in the internal rotary movements.
- Magnetic field up to ten times higher than that of conventional ferrite magnets.
- Galvanizing LANTHANE for greater resistance to salt spray test.



GAS TYPE	TIGHTENING TORQUE - Nm	MAX. PRESSURE (bar)	F	A	B	D	G
TM-MI 1/8" GAS	8	250	1/8" GAS	14	10,7	3	5
TM-MI 1/4" GAS	11		1/4" GAS	18	14,6	3	6
TM-MI 3/8" GAS	15		3/8" GAS	22	14,6	3	8
TM-MI 1/2" GAS	19		1/2" GAS	26	17,6	4	10
TM-MI 3/4" GAS	25		3/4" GAS	32	19,6	4	12
TM-MI 1" GAS	33		1" GAS	39	20,6	5	17
TM-MI 1"1/4 GAS	47		1"1/4 GAS	49	20,6	5	22
TM-MI 1"1/2 GAS	57		1"1/2 GAS	55	20,6	5	24

LMA

LIQUID LEVEL VISUAL INDICATOR PLUGS



- Body in aluminium alloy D11S.
- Oilproof gasket. In aluminium or fibre on request.
- Suppliable in anodised aluminium or brass OT 58 on request, for adequate quantities.
- Sight window in thermoplastic material with optimum shock proofness, dimensional stability and not subject to ageing. The transparency of the sight window does not change at high temperatures.

The particular profile of the trim, in white prepainted aluminium, makes reading the liquid level easy, and also allows rapid downflow if the quantity of liquid decreases.

Tmax: 80°C

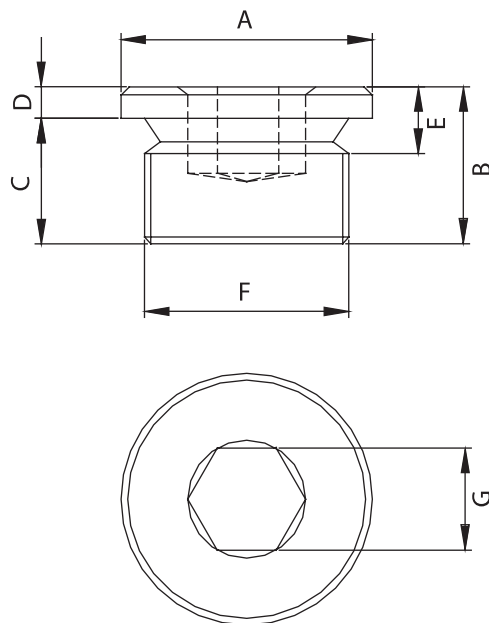
Pressure 5 Bar

Special on request:
internal O-ring in Viton
sight window in pyrex
Tmax 200°C
Pressure 10 Bar

GAS TYPE	F	A	B	C	D
LMA 1/4" GAS	1/4" GAS	8	8	17	16
LMA 3/8" GAS	3/8" GAS	9	9	22	18
LMA 1/2" GAS	1/2" GAS	10	9	27	21
LMA 3/4" GAS	3/4" GAS	10	11	32	27
LMA 1" GAS	1" GAS	11	10	40	32
LMA 1"1/4 GAS	1"1/4 GAS	14	12	50	40
LMA 1"1/2 GAS	1"1/2 GAS	13	13	55	40
METRIC TYPE	F	A	B	C	D
LMA 14x1,5	M 14x1,5	8	8	17	16
LMA 16x1,5	M 16x1,5	9	9	22	18
LMA 18x1,5	M 18x1,5	9	9	22	18
LMA 20x1,5	M 20x1,5	10	10	24	21
LMA 22x1,5	M 22x1,5	10	9	27	21

TEI

HEX. SOCKET HEAD PLUGS



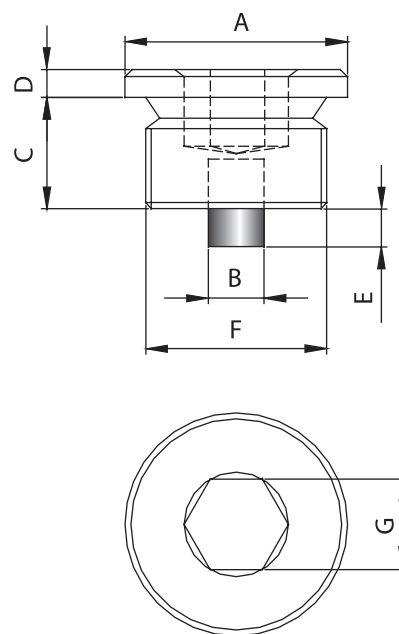
The hexagon socket head plug is useful when good tightening torque is required while avoiding protrusions.

- Body in aluminium alloy D11S.
- Oilproof gasket.

GAS TYPE	F	A	B	C	D	E	G
TEI 1/8"	1/8" GAS	14	11	8	3	5	5
TEI 1/4"	1/4" GAS	18	12	9	3	6	6
TEI 3/8"	3/8" GAS	22	15	12	3	6,5	8
TEI 1/2"	1/2" GAS	26	18	14	4	7,5	10
TEI 3/4"	3/4" GAS	32	20	16	4	8	12
TEI 1"	1" GAS	40	21	16	5	9	17

TMEI

HEX. SOCKET HEAD MAGNETIC PLUGS



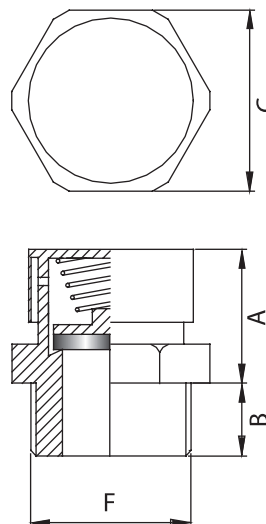
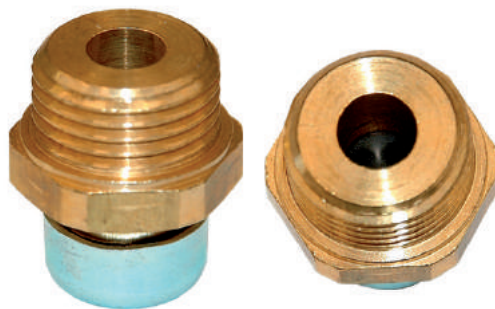
Magnetic plugs equipped with permanent magnets, in alloy Al-Ni-Co 5, with wide range of action, able to catch metal particles in the oil.

- MAGNET Al-Ni-Co 5
- Body in aluminium alloy D11S (in steel and brass on request).
- Oilproof gasket.

GAS TYPE	F	A	B	C	D	E	G
TMEI 1/8"	1/8" GAS	14	5	11	3	5	5
TMEI 1/4"	1/4" GAS	18	5	12	3	6	7
TMEI 3/8"	3/8" GAS	22	5	12	3	6	8
TMEI 1/2"	1/2" GAS	26	8	14	4	6	10
TMEI 3/4"	3/4" GAS	32	8	16	4	6	12
TMEI 1"	1" GAS	40	8	16	5	8	17

TSV

BREATHER CAPS WITH VALVE



The breather plug with valve proposed here works on the following principle: venting is obtained by the pressure inside the reducer acting on the closing gasket, which raises the spring preset to a pressure of 0.25 - 0.30 bar allowing the vapours to escape and then closes.

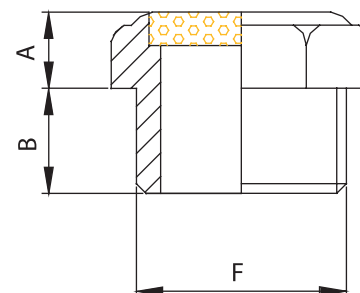
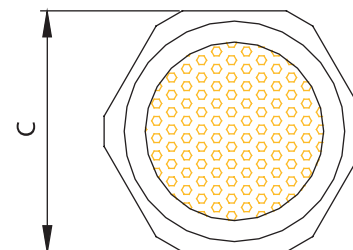
It is also recommended for machines exposed to pressurised water sprays, since the release part is protected by a cap that stops foreign bodies and liquids from entering.

- Body in brass OT 58.
- Oilproof gaskets.

GAS TYPE	F	A	B	C
TSV 1/8"	1/8" GAS	15	7	14
TSV 1/4"	1/4" GAS	20	9	17
TSV 3/8"	3/8" GAS	20	9	20
TSV 1/2"	1/2" GAS	20	10	24
TSV 3/4"	3/4" GAS	23	12	32
TSV 1"	1" GAS	30	13	40
METRIC TYPE	F	A	B	C
TSV 10x1	M 10x1	16	7	14
TSV 12x1,5	M 12x1,5	20	9	17
TSV 14x1,5	M 14x1,5	20	9	17
TSV 16x1,5	M 16x1,5	19	9	22
TSV 18x1,5	M 18x1,5	19	9	22
TSV 20x1,5	M 20x1,5	22	10	24
TSV 22x1,5	M 22x1,5	20	10	27

TSP

SILENCER CAPS WITH PAD



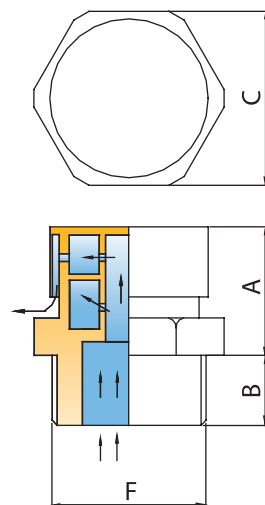
The silencer cap with sintered pad condenses the vapours present, making them fall back inside the tank.

- Body in brass OT 58.

GAS TYPE	F	A	B	C
T S P 1/8"	1/8" GAS	6	6	13
T S P 1/4"	1/4" GAS	8	8	16
T S P 3/8"	3/8" GAS	8	8	19
T S P 1/2"	1/2" GAS	9	10	24

TCSL

OIL FILLER AND BREATHER CAPS WITH LABYRINTH



This new-concept breather cap is recommended for:

- reduction units
- machine tools
- compressors, etc.

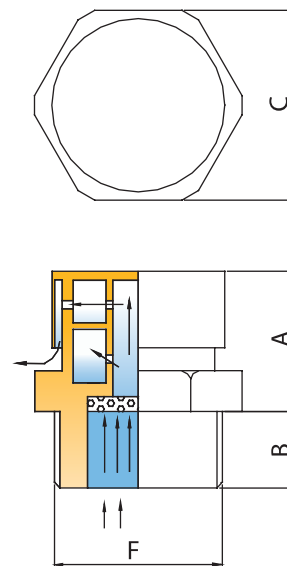
For "medium" oil splash. It consists of an ample vapour vent chamber.

- Body in brass OT 58
- Oilproof gasket.

GAS TYPE	F	A	B	C
T C S L 1/8"	1/8" GAS	16	7	14
T C S L 1/4"	1/4" GAS	18	9	20
T C S L 3/8"	3/8" GAS	19	9	20
T C S L 1/2"	1/2" GAS	20	10	27
T C S L 3/4"	3/4" GAS	25	12	32
T C S L 1"	1" GAS	34	13	40
METRIC TYPE	F	A	B	C
T C S L 14 x 1,5	M 14 x 1,5	18	8	19
T C S L 16 x 1,5	M 16 x 1,5	23	9	22
T C S L 18 x 1,5	M 18 x 1,5	19	9	22
T C S L 20 x 1,5	M 20 x 1,5	23	10	24
T C S L 22 x 1,5	M 22 x 1,5	20	10	27

TCSL/P

OIL FILLER AND BREATHER CAPS WITH LABYRINTH AND SINTERED WASHER



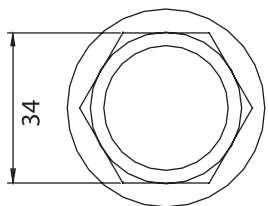
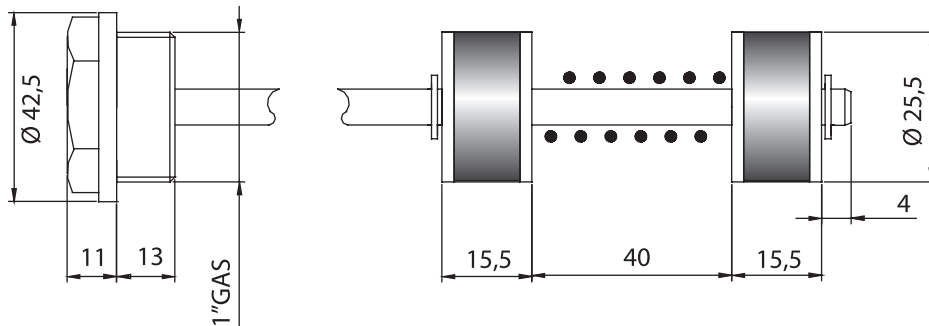
This range of oil breather caps has the same constructional characteristics as the TCSL, with the addition of a sintered bronze washer in the bottom part of the vent chamber, making it suitable for a "heavier duty" and therefore suitable for: reduction units, overdrives, building machinery, road machinery, etc.

GAS TYPE	F	A	B	C
T C S L 1/8"	1/8" GAS	16	7	14
T C S L 1/4"	1/4" GAS	18	9	20
T C S L 3/8"	3/8" GAS	19	9	20
T C S L 1/2"	1/2" GAS	20	10	27
T C S L 3/4"	3/4" GAS	25	12	32
T C S L 1"	1" GAS	34	13	40
METRIC TYPE	F	A	B	C
T C S L 12 x 1,5	M 12 x 1,5	20	9	17
T C S L 14 x 1,5	M 14 x 1,5	20	9	17
T C S L 16 x 1,5	M 16 x 1,5	20	9	22
T C S L 18 x 1,5	M 18 x 1,5	19	9	22
T C S L 20 x 1,5	M 20 x 1,5	23	10	24
T C S L 22 x 1,5	M 22 x 1,5	21	10	27

- Body in brass OT 58.
- Oilproof gasket.

TSM/1/2/3...

MAGNETIC PROBE CAP WITH ONE OR MORE ELEMENTS



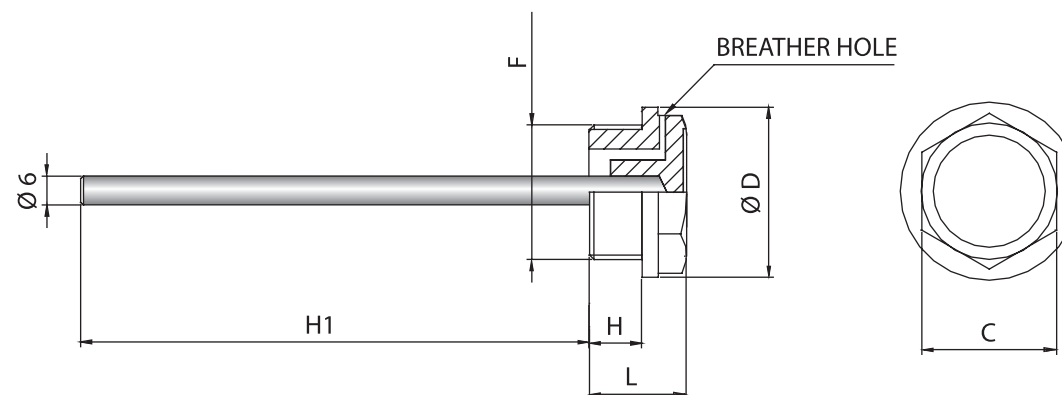
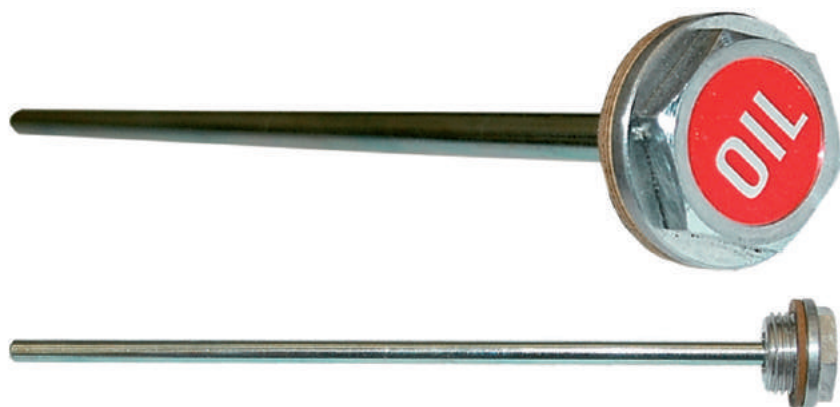
The probe cap with several elements and magnetic arc closing is the equivalent in characteristics to a magnetic column, but more economical.

- Made with milled hexagonal head and crown in light aluminium alloy.
- Chromed zinc steel rod.
- Seal ensured by a gasket with oilproof plain washer.
- Spacers for spring magnetic arc closing.
- Permanent magnets in ferritic alloy.
- Suppliable with one or more magnetic elements compatible with the length of the rod.
- Standard length 600 mm (shorter lengths on request).
- Max number of elements: 8

Example:
TSM/2 - 600

TMA - TMAS

METAL CAPS WITH LEVEL ROD AND POSSIBILITY OF BREATHER

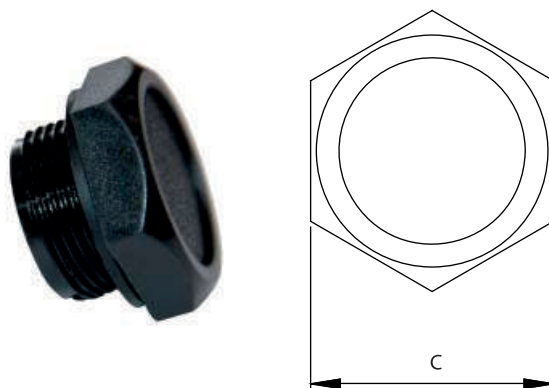


- Made with milled hexagonal head and crown in light aluminium alloy.
- Seal ensured by a gasket with oilproof plain washer.
- In the TMAS range the breather consists of just a 2mm hole.
- Chromed zinc steel level rod.
- Normally supplied with the word OIL.
- Suppliable on request with circular channels for identifying the minimum or maximum level.
- Suppliable with materials and threads to design, for adequate quantities.

GAS TYPE		F	C	D	H	L	H1
TMA 1/8" GAS	TMAS 1/8" GAS	1/8" GAS	14	16	8	14	-
TMA 1/4" GAS	TMAS 1/4" GAS	1/4" GAS	17	20	9	16	196,5
TMA 3/8" GAS	TMAS 3/8" GAS	3/8" GAS	18	22	9	17	196
TMA 1/2" GAS	TMAS 1/2" GAS	1/2" GAS	22	28	9	17	196
TMA 3/4" GAS	TMAS 3/4" GAS	3/4" GAS	27	35	10	19	195
TMA 1" GAS	TMAS 1" GAS	1" GAS	34	42	12,5	23,5	200
METRIC TYPE		F	C	D	H	L	H1
TMA - M 10x1	TMAS - M 10x1	M 10x 1	14	16	8	14	-
TMA - M 14x1,5	TMAS - M 14x1,5	M 14x1,5	17	20	9	16	196,5
TMA - M 16x1,5	TMAS - M 16x1,5	M 16x1,5	18	22	9	17	196
TMA - M 18x1,5	TMAS - M 18x1,5	M 18x1,5	20	26	9	17	196
TMA - M 20x1,5	TMAS - M 20x1,5	M 20x1,5	22	28	9	17	196
TMA - M 22x1,5	TMAS - M 22x1,5	M 22x1,5	22	28	9	17	196

- Identical for functionality to the serious TM, carried out entirely in tecnopolimero with glass. Resistant to solvents, oils and other chemical agents.

- Estate guaranteed by a level washer in rubberizing synthetic NBR
- They come normally furnished without any label
- Highest temperature of exercise in continue: 100 °C

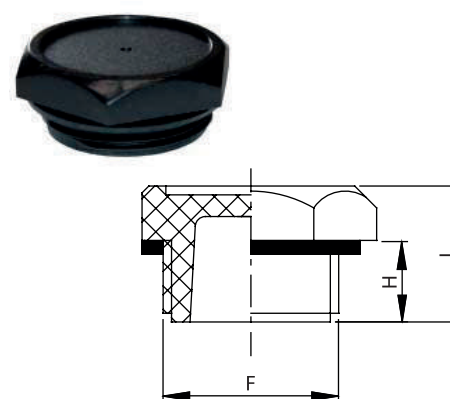


GAS TYPE	TIGHTENING TORQUE -Nm	F	C	H	L
TP 1/8" GAS	4	1/8" GAS	19	9	16
TP 1/4" GAS	4	1/4" GAS	19	9	16
TP 3/8" GAS	8	3/8" GAS	22	9	16
TP 1/2" GAS	8	1/2" GAS	26	11	18
TP 3/4" GAS	10	3/4" GAS	32	12	20
TP 1" GAS	12	1" GAS	38	13	22
TP 1"1/4 GAS	16	1"1/4 GAS	46	14	24
TP 1"1/2 GAS	16	1"1/2 GAS	55	15	26
METRIC TYPE	TIGHTENING TORQUE -Nm	F	C	H	L
TP - M 10x1,5	4	M 10x1,5	19	9	16
TP - M 12x1,5	6	M 12x1,5	19	9	16
TP - M 14x1,5	6	M 14x1,5	19	9	16
TP - M 16x1,5	8	M 16x1,5	22	9	16
TP - M 18x1,5	8	M 18x1,5	26	11	18
TP - M 20x1,5	8	M 20x1,5	26	11	18
TP - M 22x1,5	10	M 22x1,5	32	12	20
TP - M 25x1,5	10	M 25x1,5	32	12	20
TP - M 26x1,5	10	M 26x1,5	32	12	20
TP - M 35x1,5	16	M 35x1,5	38	13	22
TP - M 40x1,5	16	M 40x1,5	46	14	24

PLASTIC PLUGS WITH BREATHER

- Identical for functionality to the serious TMS, carried out entirely in tecnopolimero with glass. Resistant to solvents, oils and other chemical agents.

- Estate guaranteed by a level washer in rubberizing synthetic NBR
- In the TPS range, the breather consists of a 2mm hole (which maintains the atmospheric pressure inside the tank).
- They come normally furnished without any label
- Highest temperature of exercise in continue: 100 °C



GAS TYPE	TIGHTENING TORQUE -Nm	F	C	H	L
TPS 1/8" GAS	4	1/8" GAS	19	9	16
TPS 1/4" GAS	4	1/4" GAS	19	9	16
TPS 3/8" GAS	8	3/8" GAS	22	9	16
TPS 1/2" GAS	8	1/2" GAS	26	11	18
TPS 3/4" GAS	10	3/4" GAS	32	12	20
TPS 1" GAS	12	1" GAS	38	13	22
TPS 1"1/4 GAS	16	1"1/4 GAS	46	14	24
TPS 1"1/2 GAS	16	1"1/2 GAS	55	15	26
METRIC TYPE	TIGHTENING TORQUE -Nm	F	C	H	L
TPS - M 10x1,5	4	M 10x1,5	19	9	16
TPS - M 12x1,5	6	M 12x1,5	19	9	16
TPS - M 14x1,5	6	M 14x1,5	19	9	16
TPS - M 16x1,5	8	M 16x1,5	22	9	16
TPS - M 18x1,5	8	M 18x1,5	26	11	18
TPS - M 20x1,5	8	M 20x1,5	26	11	18
TPS - M 22x1,5	10	M 22x1,5	32	12	20
TPS - M 25x1,5	10	M 25x1,5	32	12	20
TPS - M 26x1,5	10	M 26x1,5	32	12	20
TPS - M 35x1,5	16	M 35x1,5	38	13	22
TPS - M 40x1,5	16	M 40x1,5	46	14	24

TEIP

PLUGS WITH HEXAGON SOCKET

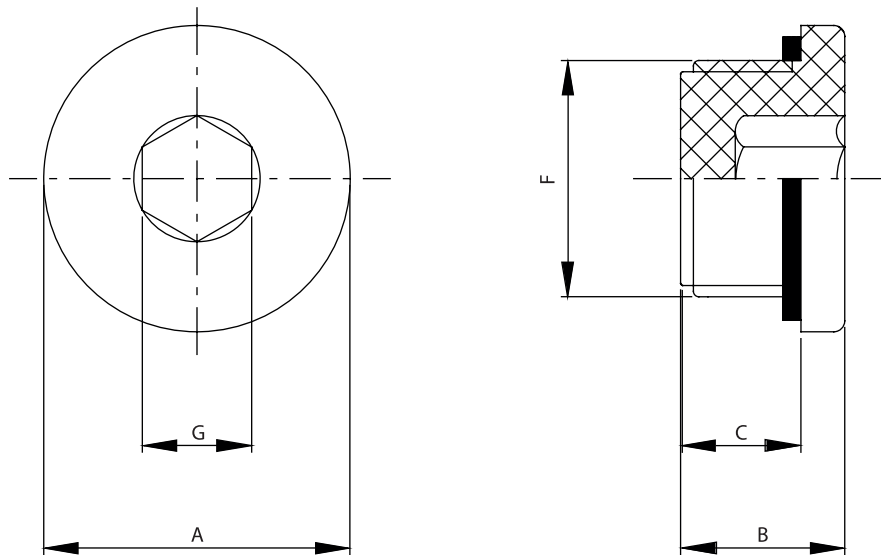


- The hexagon socket head plug is useful when want to avoiding protrusions.

Carried out entirely in tecnopolimero with glass. Resistant to solvents, oils and other chemical agents.

- Estate guaranteed by a level washer in rubberizing synthetic NBR

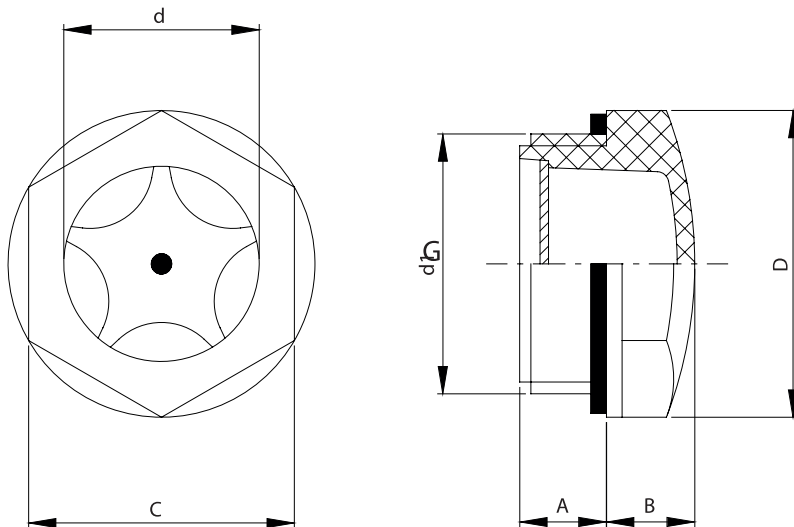
- Highest temperature of exercise in continue: 100 °C



GAS TYPE	F	TIGHTENING TORQUE -Nm	A	B	C	G
TEIP 1/4"	1/4" GAS	3	20	12	9	6
TEIP 3/8"	3/8" GAS	4	22	13	9	8
TEIP 1/2"	1/2" GAS	4	28	15	11	10
TEIP 3/4"	3/4" GAS	4	32	16,5	12	12

LMA-P

PLASTIC PLUG VISUAL LEVEL INDICATOR



- Body material: Transparent polyamide based (PA-T) technopolymer.

Resistant to solvents, oils with additives, greases, acids and alkali. Avoid contact with alcohol or detergents containing alcohol.

- Star-shaped contrast screen: Matte anodised aluminium with red central level point.

The particular shape of the magnifying lens increases and improves visibility even from side positions.

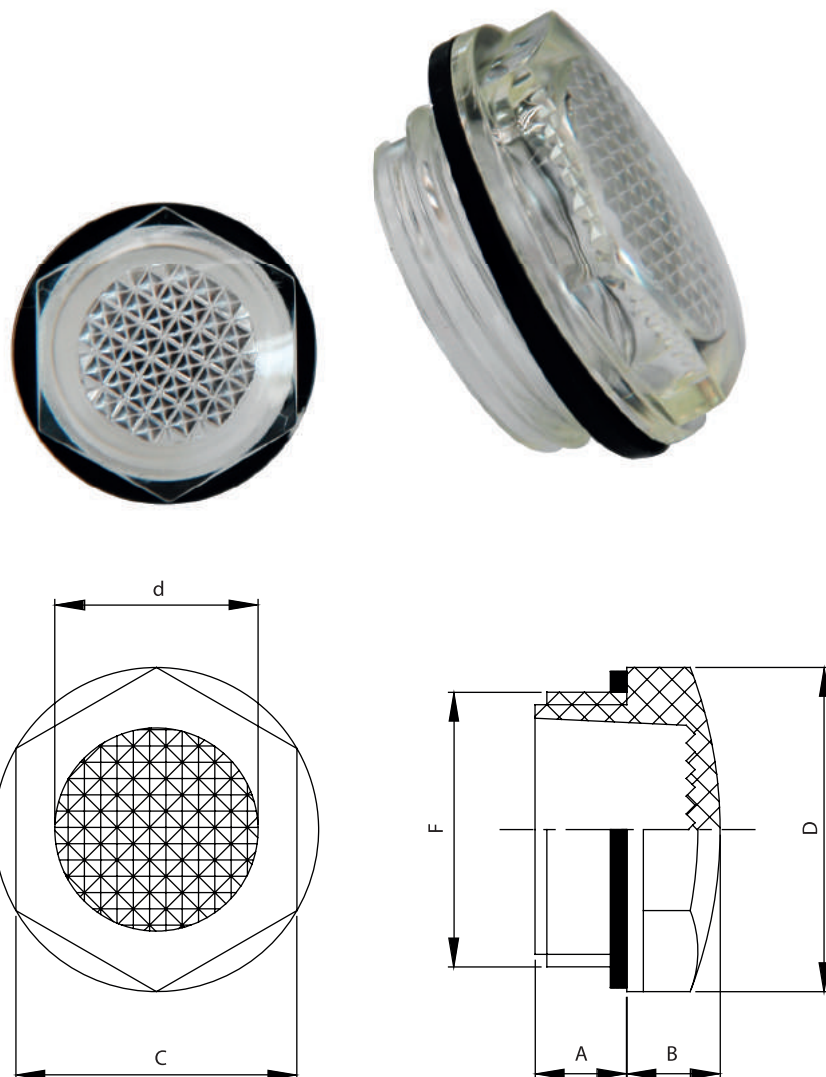
Flat packing ring: NBR synthetic rubber.

- Highest temperature of exercise in continue: 100 °C

GAS TYPE	TIGHTENING TORQUE (Max Value) - Nm	F	A	B	D	d	C
LMA-P 1/4" GAS	3	1/4" GAS	10	6	18	9	15
LMA-P 3/8" GAS	5	3/8" GAS	7,5	7	22	11	19
LMA-P 1/2" GAS	6	1/2" GAS	10,5	8	26	14	22
LMA-P 3/4" GAS	8	3/4" GAS	10,5	9	31,5	20	27
LMA-P 1" GAS	10	1" GAS	11	10	40	25	34
LMA-P 1"1/4 GAS	10	1"1/4 GAS	11,5	13	47,5	30	40,5
METRIC TYPE	TIGHTENING TORQUE (Max Value) - Nm						
LMA-P - M 16x1,5	3	M 16x1,5	8	7	22	11	19
LMA-P - M 20x1,5	10	M 20x1,5	9,5	8	26	14	22
LMA-P - M 25x1,5	10	M 25x1,5	8	9	31,5	18	27
LMA-P - M 26x1,5	10	M 26x1,5	13	9	31,5	18	27
LMA-P - M 27x1,5	10	M 27x1,5	9	9	31,5	20	27
LMA-P - M 30x1,5	10	M 30x1,5	9	10	35	22	30
LMA-P - M 35x1,5	10	M 35x1,5	11	10	40	25	34
LMA-P - M 40x1,5	10	M 40x1,5	11,5	13	47,5	30	40,5

LMA-PR

PLASTIC PRISMATIC PLUG VISUAL LEVEL INDICATOR



- Body material: Transparent polyamide based (PA-T) technopolymer.

Resistant to solvents, oils with additives, greases, acids and alkali. Avoid contact with alcohol or detergents containing alcohol.

The window consist of a continuous series if prisms which provide a clear and immediate reading of the level of the oil contained in the reservoir.

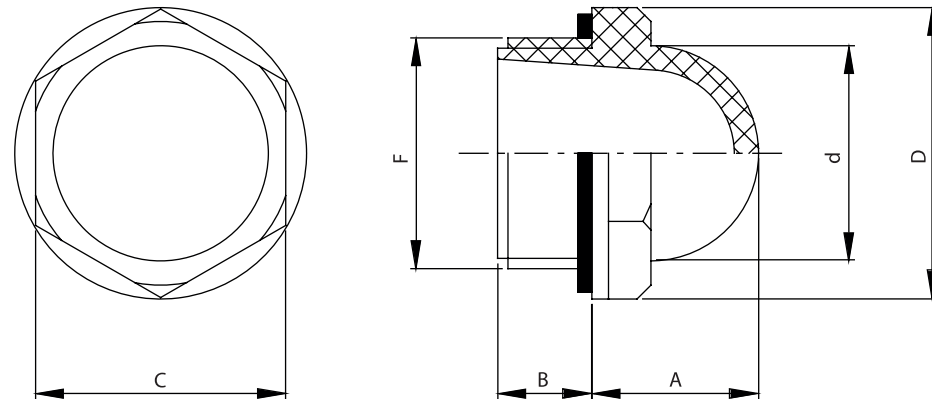
Flat packing ring: NBR synthetic rubber.

- Highest temperature of exercise in continue:100 °C

GAS TYPE	F	TIGHTENING TORQUE (Max Value) - Nm	A	B	D	d	C
LMA - PR 1/4"	1/4" GAS	3	10	6	18	9	15
LMA - PR 3/8"	3/8" GAS	5	7,5	7	22	11	19
LMA - PR 1/2"	1/2" GAS	6	10,5	8	26	14	22
LMA - PR 3/4"	3/4" GAS	8	10,5	9	31,5	20	27
LMA - PR 1"	1" GAS	10	11	10	40	25	34

LMA-PC

OIL CIRCULATION SIGHTS



- Body material: Transparent polyamide based (PA-T) technopolymer.

Resistant to solvents, oils with additives, greases, acids and alkali.

Avoid contact with alcohol or detergents containing alcohol.

- Flat packing ring: NBR synthetic rubber.

- Highest temperature of exercise in continue: 80 °C

GAS TYPE	TIGHTENING TORQUE -Nm	F	C	H	L	d	C
LMA-PC 3/8" GAS	5	3/8" GAS	7,5	13	22,5	15	19
LMA-PC 1/2" GAS	6	1/2" GAS	10,5	16	26	19	22
LMA-PC 3/4" GAS	8	3/4" GAS	10,5	19,5	31,5	25	27
LMA-PC 1" GAS	10	1" GAS	11	24	42	31	36
LMA-PC 1"1/4 GAS	15	1"1/4 GAS	11,5	26,5	46,5	38	40,5